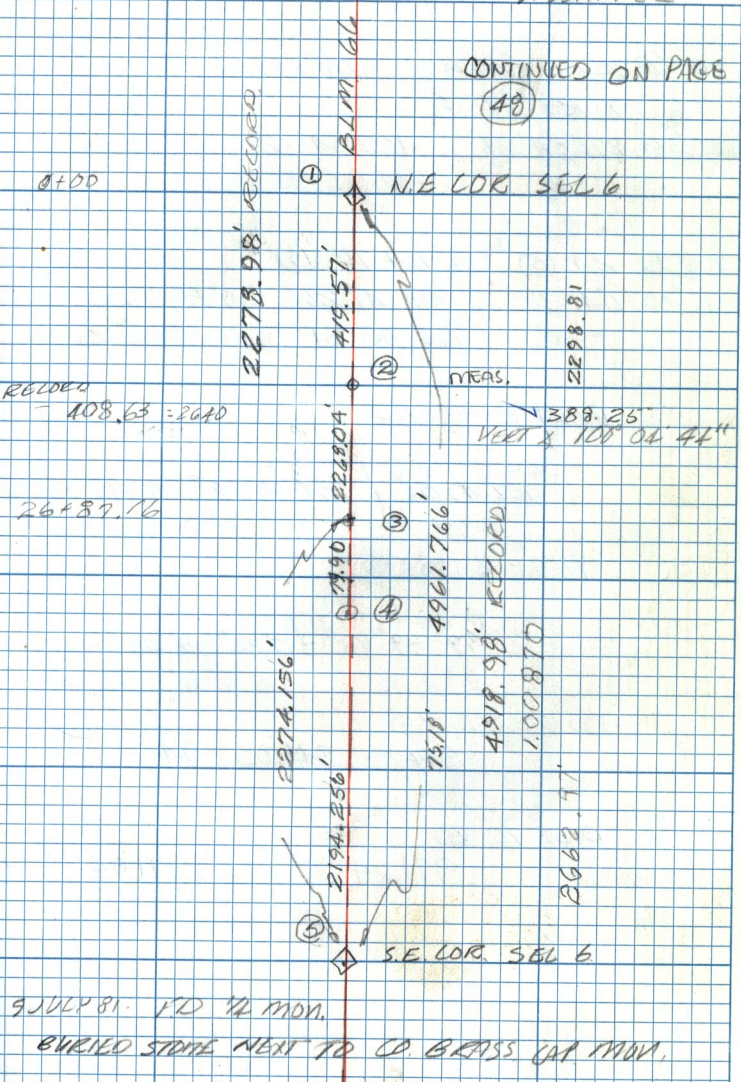


-7N R1E SEC 6

CONTINUED ON PAGE

(48)



0+00

N.E. COR. SEC 6

RECORDED

MEAS.

388.25'
VERT X 100' 04' 41"

26487.16

9 JULY 81. FD 1/2 MON.

BURIED STONE NEXT TO CO. BRASS CAP MON.